

# Meter Interface Unit 88RI



## Overview

Visiontek-88RI is a Meter Interface Unit(MIU), designed based on ARM 32-bit Cortex MCU and it communicates using RS485/RS-232 interface to the energy meter, and transfers the data to Data Concentrator Unit over Low Power Radio(2.4G Hz RF low power communication). The MIU periodically reads the data from the meters and stores all the tamper and load survey as per configured time intervals in its nonvolatile memory.

RS 485

Data Transfer

Real Time Clock

## Application Areas / Users

- SCADA
- System Integrators
- Automatic meter reading
- Industrial and Process Automation
- Telemetry
- Energy gas and fluid meter manufactures
- Web browsing
- Fleet Management
- Remote Data Logging
- Manufacturers of Data Loggers / RTUs / PLC Devices
- Sub-station automation solutions

## Benefits

- Data Transfer to BCS through DCU
- Event based messaging
- Compatible with major energy meters
- Data storage upto 90 days

Visit : [www.visiontek.co.in](http://www.visiontek.co.in)  
for other products

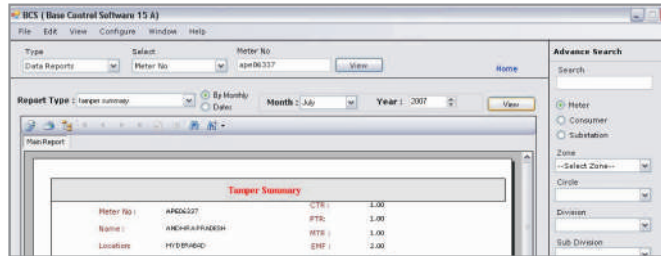


# Features

- 2.4 GHz IEEE 802.15.4 Compliant
- 128 bit AES Security Processor
- Optical port for interfacing energy meter (IEC1107/PACT/ANSI Compatible).
- In built Real Time Clock with battery back-up.
- Operates on 3-Phase /5 wires, 90- 440 VAC, 50Hz OR 1-Phase/2 wires, 63.5-370VAC, 50 Hz. Capable of withstanding surges & voltage spikes of 6KV as per IEC 61000-4-5 standards.
- EMI/EMC Compatible



Connectors



GUI Screen



RS232 Port (Meter Interface)

# Specifications

Communication Module (For local communication)	2.4 GHz IEEE 802.15.4 Compliant for communication with DCU using RF 128 bit AES Security Processor Transmit Power +16 dBm±1dB
Memory	Program Memory: 256kB + 32kB Data Memory: 1MB
LEDs	Power status Meter status
Interface Connector	RS-232 port: For Optical Communication SMA Antenna connector Optional RS-485 port: To interface the RS-485 port of Energy Meter.
I/O ports	4Digital Input (TTL level)
Real Time Clock	Inbuilt Real time clock with battery back-up
Power Supply	3-Phase /5 wires., 90- 440 VAC,50Hz OR 1-Phase/2 wires, 63.5-370VAC, 50 Hz. Capable of withstanding surges & voltage spikes of 6KV as per IEC 61000-4-5 standards.
Mounting	Wall Mounting / Chassis Mountable/ Table top
Temperature	Operation: -20°C to 50°C Storage: -25 to 70°C
Humidity	95% RH (Non condensing)
Dimensions (L x W x H)mm	130 x 170 x 40
Weight	538 gms (Approx.)
Accessories	Optical reader Wi Fi Whip Antenna 2.4 – 2.5 Ghz

Note: We pursue a policy of continuous research and product development. Specifications and features are subject to change without notice

\* Indicates Optional Feature