

Data Concentrating Unit 88GR

GSM / GPRS



Overview

VISIONTEK-88GR is designed to communicate with Meter Interface Unit (MIU) being connected with energy meters and Base Computer Software (BCS) at Server end.

DCU communicates with MIU over Low Power Radio and with BCS over GSM / GPRS The data transfer from DCU to BCS through GSM/GPRS network.



Application Areas / Users

- SCADA
- System Integrators
- Automatic meter reading
- Industrial and Process Automation
- Telemetry
- Energy gas and fluid meter manufactures
- Web browsing
- Fleet Management
- Remote Data Logging
- Manufacturers of Data Loggers / RTUs / PLC Devices
- Sub-station automation solutions

Benefits

- Event based messaging
- Configuration from remote BCS s/w
- Data transfer between BCS and DCU
- Capacity to handle max. of 32 MIUs
- CLI based Inbound dialing facility

Visit : www.visiontek.co.in
for other products

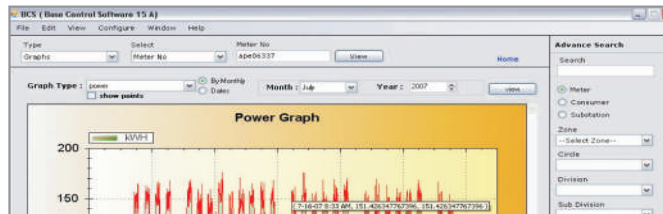


Features

- Quad-band 850/900/1800/1900 MHz GSM / GPRS communication.
- IEEE 802.15.4 Compliant 2.4GHz RF communication with MIU.
- AT command Support for GPRS
- 128 bit AES Security Processor
- Transmit Power + 16 dBm±1dB
- ARM based 32 bit Cortex MCU with inbuilt RAM and Flash
- Fully compliant with ETSI GSM Phase 2/2+ specifications.
- Real Time Clock (RTC) with battery back-up.
- 3.7V/2200 mAh internal rechargeable Lithium li-on battery for data memory.
- Inbound/Out bound dialing and event based dialing facility.
- LED indications for monitoring the status.
- Add on MIU modules feature.
- Operates on 3-Phase /5 wires., 90- 440 VAC,50Hz OR 1-Phase/2 wires, 63.5-370VAC, 50 Hz. Capable of withstanding surges & voltage spikes of 6KV as per IEC 61000-4-5 standards.
- EMI/EMC Compatible



Connectors



GUI Screen



High Gain Stick Antenna

Specifications

Communication mode	Quad - band - 850/900/1800/1900 MHZ GSM,SMS & GPRS
Processor	Core: Arm Cortex, M3 32-Bit, Make: STM32F101RC
Memory	Program Memory: 256KB + 32KB Flash Memory:1MB
Communication Module	2.4 GHz IEEE 802.15.4 Compliant for communication with MIU using RF 128 bit AES Security Processor Transmit Power + 16 dBm±1dB SIM-900B, Quad-band GSM / GPRS
Interfaces/Connectors	2 SMA antenna connectors/antennae for communication
LEDs	Power/Network status. Rx D Tx D Battery status
Power	3-Phase /5 wires., 90- 440 VAC,50Hz OR 1-Phase/2 wires, 63.5-370VAC, 50 Hz.
Battery	Li-Ion Battery, 3.0V/225mAh for RTC Li-Ion Battery-Rechargeable, 3.7V @2200mAh for Memory
Enclosure	Anodised Aluminium Extrusion
Mounting	Wall Mounting / Chassis mountable / Table Top
Temperature	Operating: - 20°C to 50°C Storage: - 25°C to 70°C.
Humidity	95% RH non condensing
Immunity	IEC 61000-3-2 and CISPR 22 IEC 61000-4-2, level 3 IEC 61000-4-3, IEC 61000-4-4, IEC 61000-4-5, IEC 61000-4-6, all level4
Certification	NABL accredited lab certification for all type tests as per relevant IEC and IS standards.
Dimensions (L x W x H) in mm	130 x 170 x 40
Weight	830 grams (Approx.)
Accessories	GSM Magnetic Whip Antenna (5dB with 3 meters cable) Mounting screws for wall mounting

Note: We pursue a policy of continuous research and product development. Specifications and features are subject to change without notice

* Indicates Optional Feature

