

# Intelligent Modem 81GI



## Overview

VISIONTEK-81GI is a Quad-band intelligent GSM/GPRS modem suitable for long duration data transmission. The modem periodically collects the data from the energy meter as per the schedule time intervals and stores in the internal flash memory. It forwards the stored data to the remote central station through GSM/GPRS network. It comes with RS485 & RS232 serial interface ports and SMA connector for connecting to the external communication.

GSM / GPRS

Data Transfer

RS 232

## Application Areas / Users

- Automated Remote Meter Reading
- Power Sector - All Distribution Companies
- Other utilities - Water and Gas
- M2M applications
- Telemetry
- System Integrators



Connectivity

## Benefits

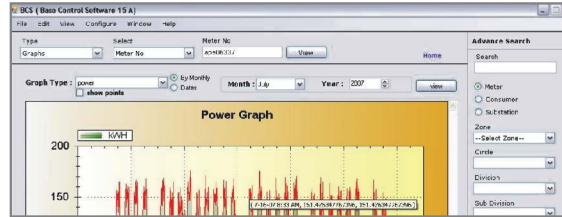
- |   |   |
|---|---|
| <ul style="list-style-type: none"> <li>■ Event based messaging</li> <li>■ Configuration from remote BCS s/w</li> <li>■ Data transfer between BCS and Modem</li> </ul> | <ul style="list-style-type: none"> <li>■ Compatible to major energy meters</li> <li>■ CLI based Inbound dialing facility</li> <li>■ Real time data</li> </ul> |
|---|---|

# Features

- In-built Quad-band GPS/GPRS Engine
- 1.8V/3.3V SIM interface
- Fully compliant with ETSI GSM Phase 2/2+ specifications
- In-built SMPS power supply with 6KV surge protection
- RS-485 & RS-232/RF (SMA) interfaces for external communication
- LED indications for monitoring the status.
- In-built battery back-up facility for RTC and Memory
- External I/O interface
- Wall mountable / Chassis Mountable/Table top
- EMI/EMC Compatible



Connectors



GUI Screen



Energy Meter with optical port cable

# Specifications

Communication Module	SIM-900B, Quad-band GSM / GPRS
Processor	Core: Arm Cortex, M3 32-Bit, Make: STM32F101RC
Memory	Program Memory: 256KB + 32KB, Flash Memory:1MB
LEDs Indicators	LED-RED for Power / Network, LED-YELLOW for Rx D, LED-GREEN for Tx D, LED-RED for Battery Status
External Interfaces Compatibility	9PIN D-sub connector for RS-232 Interface * 2PIN Terminal Block(WAGO Type) for RS-485 interface SMA (F) connector for GSM antenna.
Communication capabilities	Quad-band 850/900/1800/1900 MHZ GSM, SMS & GPRS
Power	Input Power: 3-Phase /5 wires., 90- 440 V AC,50Hz OR 1-Phase/2 wires, 63.5-370V AC, 50 Hz. RF Power: Class 4 (2 W ) at GSM850 and EGSM 900 MHz Class 1(1W ) at DCS1800 and PCS 1900MHz Fully compliant to ETSI GSM Phase 2/2+
Battery	Li-Ion Battery, 3.0V/225mAh for RTC Li-Ion Battery-Rechargeable, 3.7V @1000mAh for Memory
Enclosure	Anodised Aluminum Extrusion Complies to IP 63
Mounting	Wall Mounting / Chassis mountable / Table top
Temperature	Operating: -20°C to 60°C, Storage: -25°C to 70°C
Humidity	95% RH non condensing
Dimensions in mm	170 x 90 x 45
Weight	750 gms (Approx)
Accessories	5dB Whip Antenna

Note: We pursue a policy of continuous research and product development. Specifications and features are subject to change without notice  
Product image shown is for existing product. Few changes will be there on the front panel based on above specifications

\* Indicates Optional Feature



Linkwell Telesystems Pvt. Ltd. 1-11-252/1B, Behind Shoppers Stop, Begumpet, Hyderabad 500 016, Andhra Pradesh, INDIA  
Telephone: +91 40 66388000, Fax: +91 40 66388006, 27763838 e-mail: [info@visiontek.co.in](mailto:info@visiontek.co.in) [www.visiontek.co.in](http://www.visiontek.co.in)